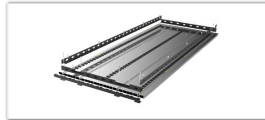
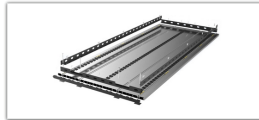


ALFO Mover Floor



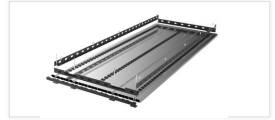
Ford Transit Passenger WBI48"

Weight: 209 lbs.
128 × 52.5 inch.



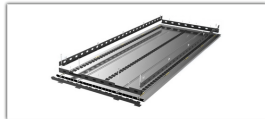
Ford Transit Passenger WBI48" EL

Weight: 269 lbs.
157 × 52.5 inch.



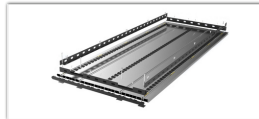
Ford Transit Passenger WBI48" EL DRW

Weight: 269 lbs.
157 × 52.5 inch.



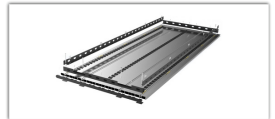
Mercedes Sprinter WBI44"

Weight: 196 lbs.
122 × 53 inch.



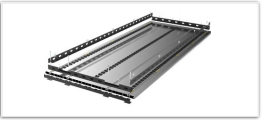
Mercedes Sprinter WBI70"

Weight: 269 lbs.
157 × 53 inch.



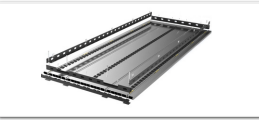
Mercedes Sprinter WBI70" DRW

Weight: 269 lbs.
157 × 53 inch.



Ram Promaster WBI59"

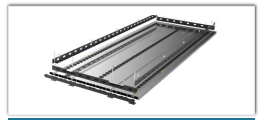
Weight: 209 lbs.
128 × 56 inch.



Ram Promaster WBI59" EL

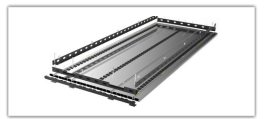
Weight: 269 lbs.
157 × 56 inch.

SAVANA



GMC SAVANA WBI55" EL

Weight: 209 lbs.
128 × 52 inch.



M180-BT For Box Trucks

Weight: 542 lbs.
157 × 52.5 inch.



ALFO Flooring System



Ford Transit WB148" Passenger Wagon
Weight: 193 lbs.
128.5 × 68.49 x 1.5 inch.

Ford Transit WB148" EL ELEC Passenger Wagon
Weight: 239 lbs.
157 × 68.49 x 1.5 inch.

Ford Transit WB148" EL-DRW Passenger Wagon
Weight: 239 lbs.
157 × 68.49 x 1.5 inch.



Ford Transit WB148" Cargo Van
Weight: 195 lbs.
128.5 × 68.49 x 1.5 inch.

Ford Transit WB148" EL-DRW Cargo Van
Weight: 242 lbs.
157 × 68.49 x 1.5 inch.

Ford Transit WB148" EL Cargo Wagon
Weight: 242 lbs.
157 × 68.49 x 1.5 inch.



RAM Promaster WB159"
Weight: 245 lbs.
141.5 × 70.79 x 1.5 inch.

RAM Promaster 3500 WB159" EXT
Weight: 271 lbs.
156 × 70.79 x 1.5 inch.



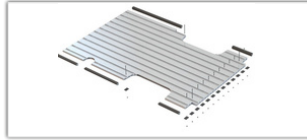
Mercedes Sprinter WB144"
Weight: 192 lbs.
128 × 64.96 x 1.5 inch.

Mercedes Sprinter WB170"
Weight: 267 lbs.
173.5 × 64.96 x 1.5 inch.

Mercedes Sprinter WB170" EXT
Weight: 279.14 lbs.
183.95" x 68.49 x 1.5 inch.

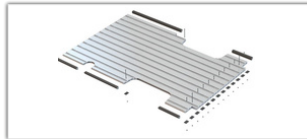
Mercedes Sprinter WB170" EXT DRW
Weight: 275 lbs.
183.95" x 68.49 x 1.5 inch.

ALFO Flooring System



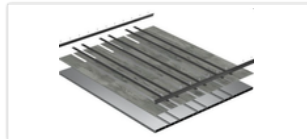
GMC Savana WB135"

Weight: 203 lbs.
113 x 81 x 1.5 inch.



Chevy Express WB135"

Weight: 203 lbs.
113 x 81 x 1.5 inch.



Compact Half Floor

Weight: 123 lbs.
78.2 x 65 x 1.5 in.

Seating Solution

ALFO SEGE Single Seat with Legs



The SEGE Single Seat with Seat Legs offers comfort and safety for passenger and mobility vans, with an integrated 3-point belt and FMVSS/CMVSS 207/210/302 certification. Works with standard L tracks of 5.85" spacing or ALFO panels.

Part: X1-16-100A | Weight: 44.5 lbs.

ALFO SEGE Double Seat



The ALFO SEGE Double Seat is a premium two-passenger seat for mobility and shuttle vans with integrated 3-point belts, FMVSS/CMVSS certification, and exclusive ALFO floor compatibility.

Description | Part

Left Side	X1-16-170A
Right Side	X1-16-160A

Quick-Release, Aluminum for Freedman & SEGE Seats



40% lighter than steel, built with superior Aluminum alloys, and anodized for the best interior finish, and works on SEGE & Freedman Single seats only. Works with standard L tracks of 5.85" spacing or ALFO panels

Part: X1-10-35E | Weight: 10.58 lbs.

Quick-Release, Steel for Freedman & SEGE Seats



Quick Release steel SEGE & Freedman single seats only. It is a powder-coated seat base built with high-strength steel, compatible with standard L-Track with 5.85" spacing or ALFO panels.

Part: X1-10-060B | Weight: 16.76 lbs.

Adapter Plate for Freedman Foldaway Seat Driver Side | Passenger Side



A lightweight aluminum plate enables a Freedman Foldaway seat to attach directly to the tracks and be relocated without bolting through the tracks or OEM floor.

Description | Part

Driver Side	X1-10-34C
Passenger Side	X1-10-58A

Manual Foot



High-strength track nuts slide in ALFO L-Track panels. Each supports heavy loads and fits single, double, and triple Ford or Freedman seats. M10 Grade-8 bolts only. Set of 4.

Description | Part

Single piece	X1-10-11C
Kit of 4 pieces	X1-10-90A

Seat Legs for Ford Single Seat



High-strength, powder-coated seat legs that can attach the Ford single seat to the ALFO floor.

Part: B1-10-10A | Weight: 23.81 lbs.

Seat Legs for Ford double Seat leg



High-strength, powder-coated seat legs that can attach the Ford double seat to the ALFO floor.

Part: B1-10-20A | Weight: 23.81 lbs.

Seat Legs for Ford Triple Seat leg



High-strength, powder-coated seat legs that can attach the Ford triple seat to the ALFO floor.

Part: B1-10-30A | Weight: 35.71 lbs.

Seat Leg Kit for Ford Seat – Over the wheel-well (Front)



Over the Wheel Well Seat Brackets are steel brackets that allow you to place a Ford seat over the front side of the wheel well.

Part: F40-F50-F60 | Weight: 15.70 lbs.

Seat Leg Kit for Ford Seat – Over the wheel-well (Rear)



The F70 bracket attaches the OEM seat to the D-pillar on the rear side of the wheel well.

Part: F40-F50-F70 | Weight: 14.82 lbs.

Bridge Bracket | Over the Wheel-Well for Freedman Single Seat



High-strength bridge bracket for mounting Freedman single seats (Goes, Esquire) over the wheel well. Designed with two adjustment positions and compatible only with ALFO floors.

Description | Part

Driver Side	X1-17-030A
Passenger Side	X1-17-040A

Finishing Product

Bezel Kit for Ford WB 148 & EL Wagon



The plastic bezel kit covers floor gaps and corners in Ford interior mobility vans, eliminating extra Gerflor cutting. It ensures a smooth, consistent, and premium floor finish.

Part: B1-27-020A | B1-27-030A
Weight: 1.06 lbs.

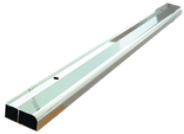
End Plugs for ALFO Panels



End plugs cover floor extrusion gaps and sharp edges, providing a safe and clean finish to the flooring system.

Part: X1-27-001A | Weight: 0.07 lbs.

Scuff – Plate for Sprinter



ALFO scuff plate with anti-skid feature for rear door entry.

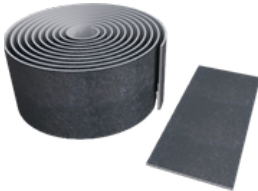
Part: X1-12-01A | Weight: 4.5 lbs.

L-Track Covers



Black color plastic covering for L-track to secure it from collecting dust, dirt, debris, or any fluid. Kit include 11 L-track covers for ALFO Floors only.

Part: X1-15-10A | Weight: 0.09 lbs.



Graphite colored, rubberized floor cover that is pre-cut, non-skid, and peel-&-stick covering for ALFO panels, a set includes 11 strips.

Gerflor covering

Vehicle Type	Part #	Length
Ford Transit WB148 / Sprinter WB144	X1-15-30A	129 in
Ford Transit WB148 EL	X1-15-40A	158 in
Promaster WB159	X1-15-50A	158 in
Promaster WB159 EXT	X1-15-60A	158 in
Sprinter WB144 / WB170 EXT	X1-15-60A-WB170	181 in

Accessories



Cot Mount Adaptor

The Cot Mount Adaptor allows quick Stryker/Ferno Antler installation and easy repositioning between vehicles.

Part: X1-85-001A | X1-85-002A

Weight: 2.58 lbs.



Grab-Rail | B-Pillar for Ford Transit

Strong, ergonomic grab rail for safe entry and exit. Bright yellow for high visibility.

Part: B5-83-010A | Weight: 4.37 lbs.



T-Nut & Washer

Premium high-strength steel T-nut installs from the top and slides into ALFO L-track panels. Designed for heavy loads and tested for Ford and Freedman single seats.

Part: X1-10-050A | Weight: 0.13 lbs.



Grab-Rail | B-Pillar for Ford Transit

Anti-skid van steps (36° & 98°) with a crocodile-mouth design for maximum traction and safety. Made from powder-coated, rust-free aluminum with easy vehicle-specific installation and sleek side covers.

Part: B5-94-300A | Weight: 52.21 lbs.

WOTS- Wheelchair Tiedowns

Standard L-Track Tie-Down, Full Kit



This system meets WC18 higher-load requirements and is compatible with WC19 wheelchairs. It uses premium materials and meets all international standards for wheelchair-occupant tie-down systems.

Part: X1-81-100A | X1-81-200A

WOTS Full Kit with Fixed Shoulder



This hybrid configuration features auto-retractable floor tie-downs with a smooth, reliable self-tensioning mechanism, paired with a Fixed Shoulder Belt to provide a stable, manually adjustable static restraint.

Part: X1-81-100A | X1-81-300A

Tie Downs for L-Track Pack of 4



(4) Pack of floor restraints for wheelchair securement. These cost-efficient floor mounts lead the industry in safety, design, and functionality, and comply with WC18/19, ISO 10542, and SAE J2249.

Part: X1-81-100A

Standard L track Tie-down (Single)



It consists a single tie-down of a 4-point securement system that leads to high safety, aesthetic design, and desired functionality in the most cost-efficient way.

Part: X1-81-30C

Lap & Shoulder Belt with Retractor



This integrated Combination Belt attaches to the rear restraints to secure both lap and shoulder. The height adjuster provides nearly 20" of adjustment for proper occupant positioning. This belt is only compatible with the WOTS tie-downs system.

Part: X1-81-090C

WOTS Fixed Shoulder & Lap Belt



The WOTS Fixed Shoulder and Lap Belt is designed to safely secure wheelchair occupants during transit with a focus on stability and simplicity. Only compatible with WOTS tie-downs.

Part: X1-81-300A

WOTS Wheelchair Lap Belt



The WOTS Wheelchair Lap Belt is a genuine replacement only compatible with WOTS securement system. It secures the occupant across the pelvis as a key part of the 4-point safety system.

Part: X1-81-320A

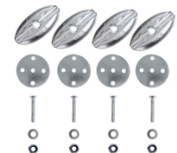
Mounting Hardware for L-Track Pack of 4



The WOTS track locker connects the WOTS restraint to L-track. Made from patented aluminum, it is extremely lightweight—about one-third the weight of similar products on the market.

Part: X1-81-010B

Tie Downs for L-Track Pack of 4



Compact oval puck to allow for easy wheelchair installation on your plywood floor. This puck is made with premium steel with electropolishing for the best look and maximum durability.

Part: X1-81-070A