

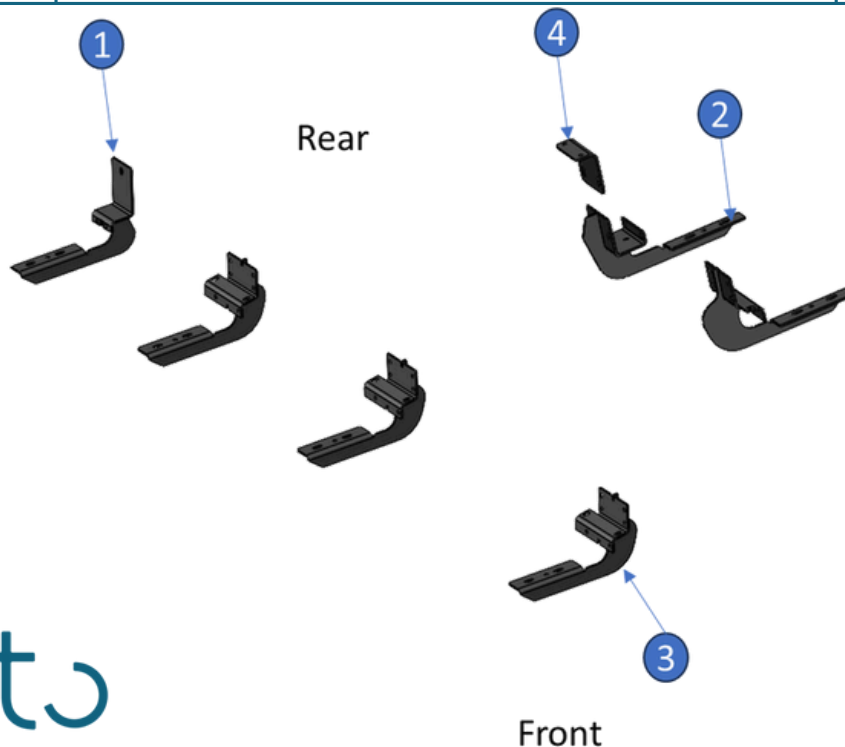
INSTALLATION INSTRUCTIONS



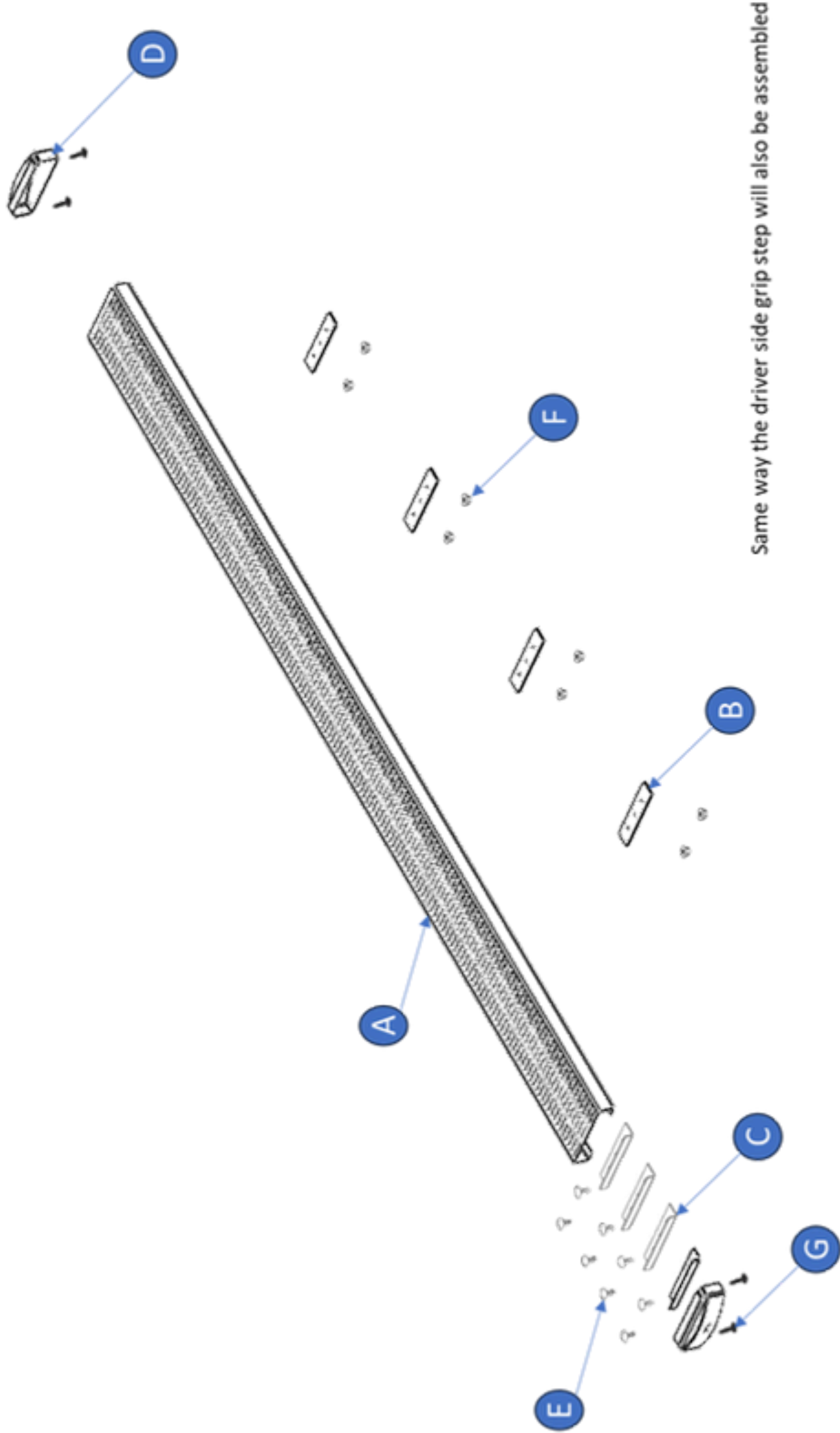
ALFO Anti-Skid Running Board Set

Assembly Requirements

SNo.	Description	Qty
1	Bracket 1	1
2	Bracket 2	1
3	Bracket 3	4
4	Driver Side Bracket Plate	1
5	Flange Hex Nut, M8	28
6	Thread Cutting Bolt, M8x25mm	14
7	Washer, M8	24
8	Hex Bolt, M8x25mm	8
9	Plastic Spacer(OD - 25mm, ID - 9mm, thk - 6.5mm)	8
10	T-Bolt	1
11	U-Bolt, M8x3.75"(centre to centre) Thread Length - 28mm	4
12	Lock Washers, M8	12
13	Clip Nut, M8	12
14	Bolt Retainer	9



SNo.	Description	Qty
A	Aluminum Anti-Skid Plate	1
B	Bottom Plate	6
C	Tom MTG Angle	6
D	Side Cover	4
E	Carriage Square Neck Bolt/Hex Bolt, M8 x 25 SST	14
F	Flange Hex Nut, M8	14
G	Screw Self Tap #8-18 x 1/2", SST, BLK	8



Same way the driver side grip step will also be assembled

1. Begin on the passenger side and identify the four mounting points (refer to Figure 1 on the last page of the manual). Position each bracket at its designated mounting point and mark the holes on both the rocker panel and pinch weld.

Note:

Vans can be configured in one of 2 ways:

- If the van has factory fitted studs, go to step 3A.
- If the van has no factory fitted studs, go to step 3B.

Fig.1

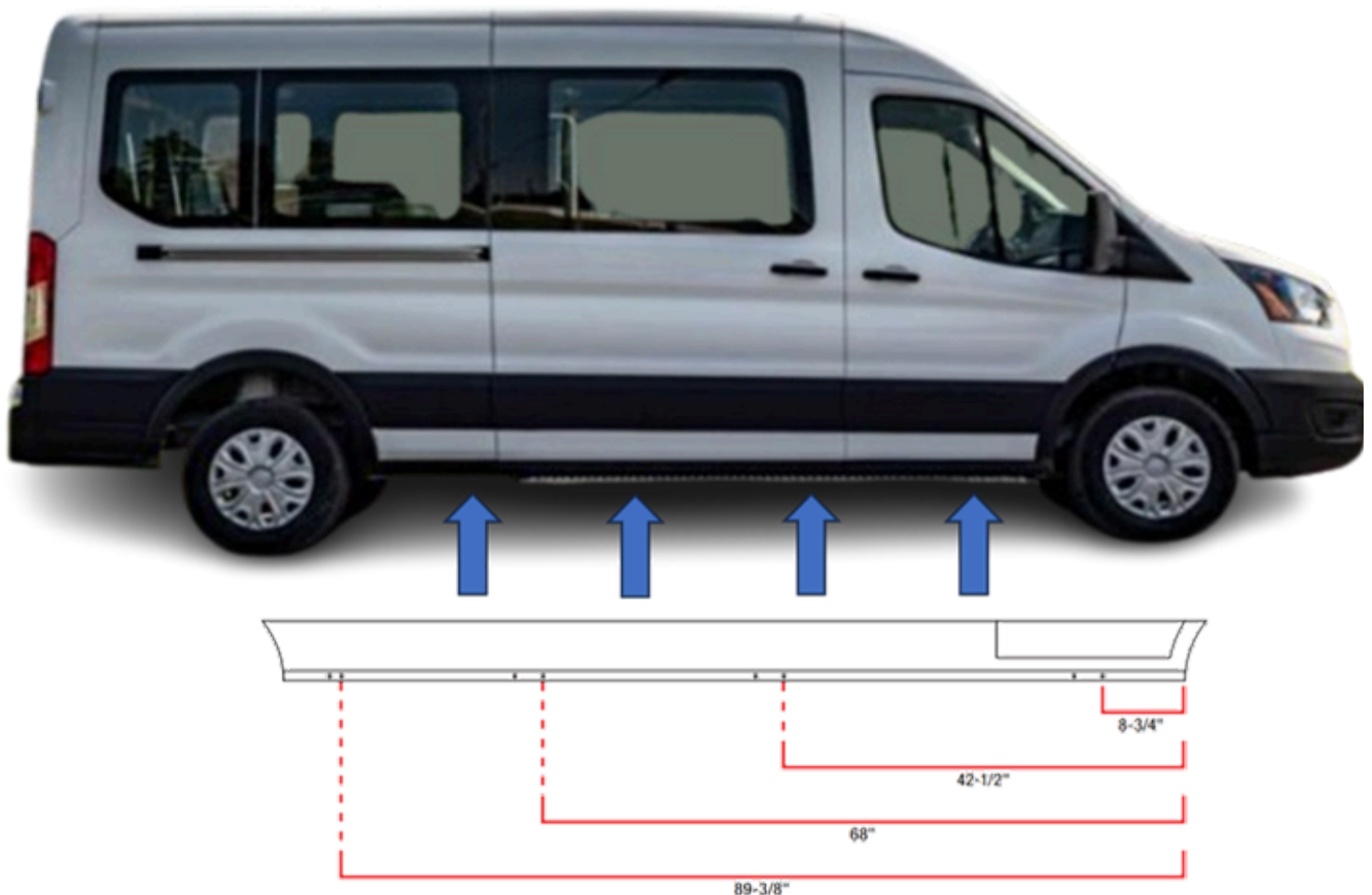


Fig.2

2. Using a flathead screwdriver, release the bottom push pins from the underside of the plastic rocker molding. The area where push pin will be there is marked in Figure 2.

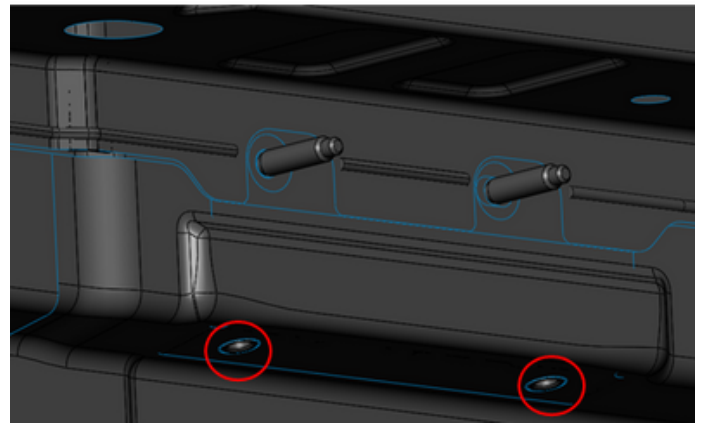


Fig. 2a

Note: Do not fully remove the plastic trim shown in figure 2a; only release the bottom push pins."



- 3A. Slide two black spacers onto the factory studs. Position the front bracket onto the studs and secure it with two M8 nuts, two two M8 lock washers (Item 12 in table 1), and two M8 thread-cutting (Item 6 in table 1) bolts in the factory holes at the bottom of the rocker. Snug the hardware, but do not fully tighten. Repeat this process for the second and third mounting points (refer figure 3).

Fig. 3A



- 3B. Locate the first bracket's mounting position and mark the spots for each hole. Drill pilot holes at the marked spots using a 3/32" bit, then enlarge them with a 3/8" bit. Slide two M8 clip nuts over the lower set of holes in the pinch weld and insert the 3.75" U-bolt through the upper drilled holes. Secure the U-bolt with bolt retainers, then slide two black spacers onto the U-bolt followed by the mounting bracket. Secure the bracket using two M8 flange hex nuts (Item 5 in table 1) on the studs, and two M8lock washers with M8 bolts (Item 8 in table 1) in the clip nuts. Snug the hardware but do not fully tighten. Repeat this process for the second and third mounting locations(Refer figure 3B).

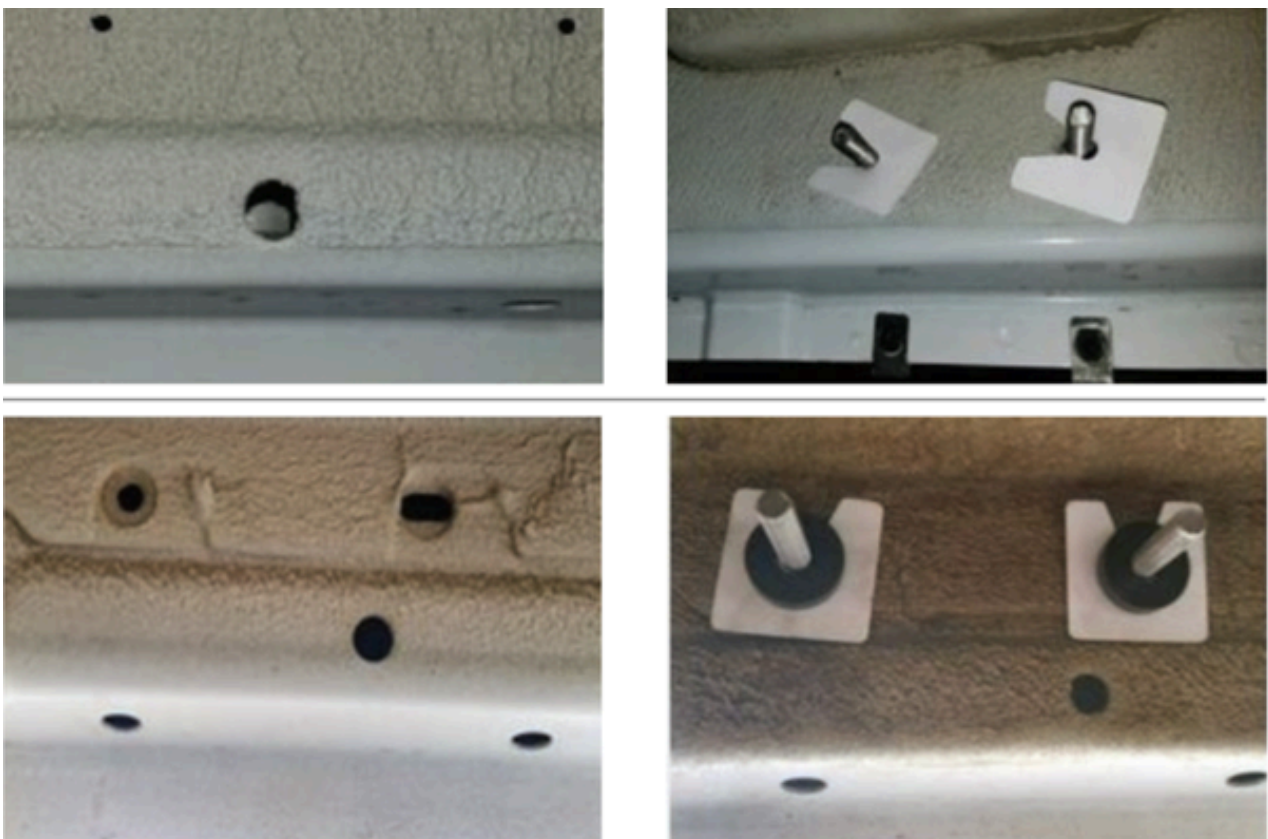


Fig. 3B

4. Locate the fourth mounting position and repeat step 3 to drill the lower mounting holes. Insert the M8 T-bolt weldment into the factory slot and secure it with a plastic bolt retainer (Item 14 in table 1).

Slide two M8 clip nuts (Item 13 in table 1) over the drilled holes in the pinch weld, then position the rear mounting bracket over the T-bolt.

Secure it with an M8 nut and two M8 bolts. Snug the hardware, but do not fully tighten (refer figure 4). Repeat steps 1-3 for the driver's side at the first mounting point.



Fig. 4

5. On the driver's side, assemble the AC bracket by securing it with two M8 bolts, two M8 washers, and two M8 flange hex nuts(item 5 in table 1) as shown in figure 5.

Fig. 5



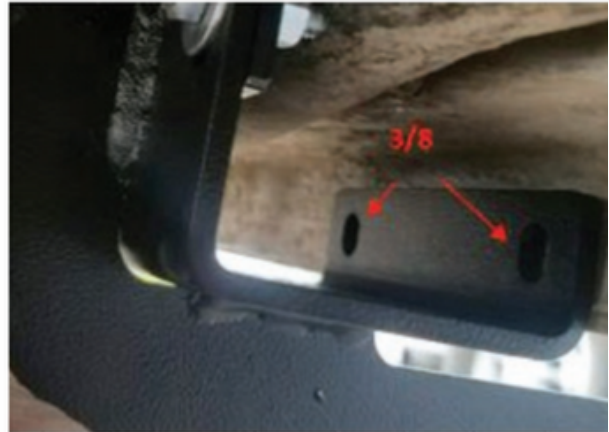
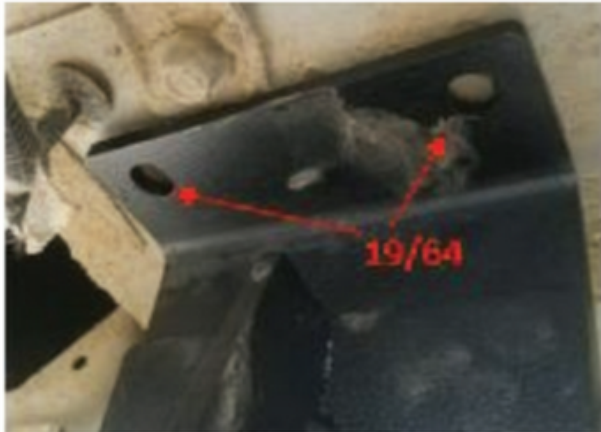
6. Insert the assembled AC bracket along the pinch seam and mark each of the four holes locations as shown in figure 6.

Fig. 6



7. Drill the two upper holes with a $19/64$ " drill bit and the two lower holes with a $3/8$ " drill bit.
The two upper holes will use self-threading bolts (Refer figure 7).

Fig. 7



8. Slide two clip nuts over the bottom drilled holes and secure the AC bracket to these holes using two M8 bolts (Item 8 in table 1) and two M8 lock washers (Item 2 in table 1) as shown in figure 8. For the upper holes, attach the AC bracket using clip nuts (Item 13 in table 1), along with two M8 thread-cutting bolts (Item 6 in table 1) and two M8 lock washers. Tighten the hardware snugly but avoid fully tightening at this stage.

Fig. 8



Pareto

Aluminum Systems LLC

If you have any questions, comments and concerns, or need additional information, please do not hesitate to contact us at the following QR leading to our website Contact Us page:



Pareto

Aluminum Systems LLC

ALFO